

ANALYZING DESIGNING DELIVERING

it's all about people



WE
»»

EVALUATE, DESIGN, AND ENHANCE
THE PLACES PEOPLE WANT TO
BE AND THE SYSTEMS THAT MAKE
THOSE PLACES BETTER.



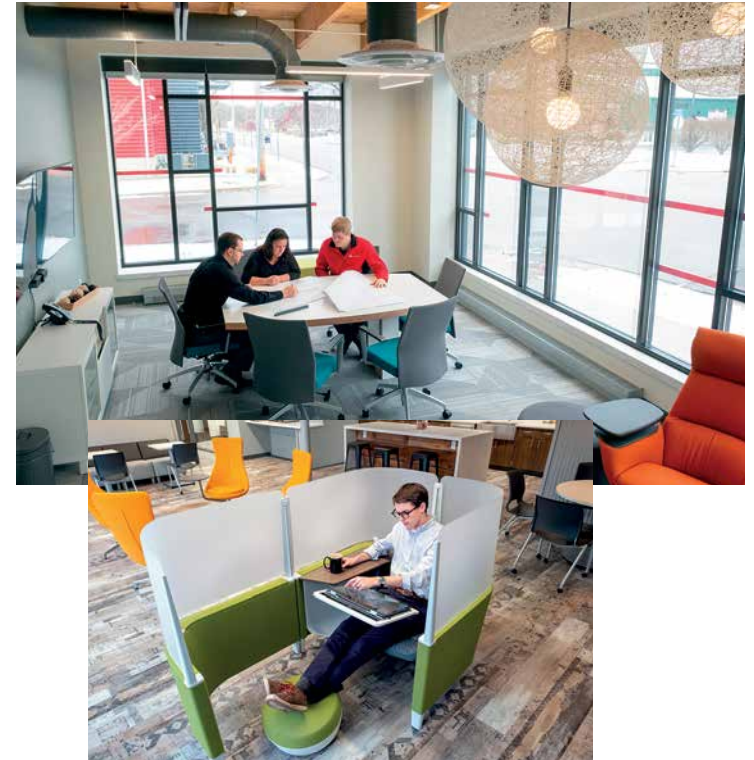
ABOUT US

it's all about a great team »»

Our company roots go back more than 70 years to when Wightman got its start serving the engineering and surveying needs of municipalities in southwestern Michigan. Since then, our client base has grown and so has our expertise. Today, in addition to serving government and municipal entities, we specialize in the commercial, utility, and education sectors throughout Michigan and the Great Lakes region. As new technologies have emerged, our services have evolved, too. Our ability to provide in-house engineering, surveying, architectural design, environmental services, GIS, interior design, landscape architecture, planning, and reality capture makes us the single-source planning, design, and consulting partner for many of our clients.

We've worked hard since our founding in 1946 to earn the trust of our clients and become one of the most prominent engineering, surveying, architectural, and environmental services firms in the region. This trust was recognized when we were named the 2016 Large Firm of the Year in the state of Michigan by the American Council of Engineering Companies.

As an employee-owned company, we have a relentless commitment to creating an experience for our clients that goes beyond the job at hand. We are driven to create partnerships where we become part of your team — a trusted adviser who brings original, effective, and practical solutions to the table. We are also passionate about giving back to the communities we serve through corporate and personal community involvement and through support of activities that enhance the quality of life for everyone.



ARCHITECTURE
ENGINEERING
ENVIRONMENTAL
SURVEY
GIS
INTERIOR DESIGN
LANDSCAPE ARCHITECTURE
PLANNING
REALITY CAPTURE

ARCHITECTURE

a passion for aesthetics, function, and practicality »»

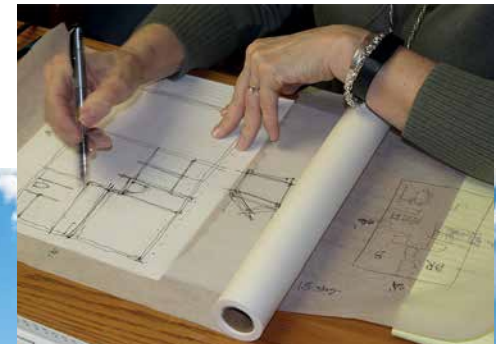
Architecture is a mix of art and science. Art creates emotional impact through design. Science delivers functional, healthful environments by applying the latest research on ergonomics, acoustics, thermal comfort, lighting, and energy efficiency. When it all comes together, you have attractive spaces where people can be engaged and productive.

How do we do this at Wightman? Our licensed architects use Design Thinking, a process that allows us to learn about you, define success based on your criteria, and use your input throughout the process to create a design that brings your vision to life. We apply this versatile process to every project — from commercial, retail, and education to municipal, residential, and more.

Do you have a unique site challenge that goes beyond architectural design? No problem. Our Architecture Studio is backed up by Wightman engineers, surveyors, environmental experts, and reality capture pros who can step in with their expertise at a moment's notice.

ARCHITECTURE SPECIALTIES

- Pre-Design Services
- Design Services
- Construction Administration & Management Services
- Educational Facility Planning
- Residential Design
- Industrial Facility Design
- Sustainable Design
- Rendering & Animation
- Urban Design & Master Planning



ENGINEERING

looking out for you and your project—start to finish »»

When you see fresh asphalt, we see drivers traveling on safer roads. When you see a water treatment plant, we see children drinking clean water. When you see a trail system, we see families hiking and biking together.

From planning and design through construction management and inspection, Wightman engineers focus on the impact your transportation, water and sewer system, and land development projects will have on people. We do this by learning about your needs and helping you avoid pitfalls. We think ahead, beyond the project at hand, to maximize your resources, and we use our experience to keep your project on schedule and on budget.

With an extensive support team, we take a holistic approach to project design and management. This builds value for you and creates a sense of comfort knowing we are your trusted advisers.

ENGINEERING SPECIALTIES

- Transportation
- Site Development
- Specialty Design Projects (Streetscape, Roundabouts, Drains, etc.)
- Bridges, Dams & Culverts
- Parks & Recreation
- Grant & Funding Administration
- Studies
- Permitting
- Community-wide Asset Management Plans
- Materials Testing
- Water
- Wastewater
- Stormwater Management
- Hydrogeologic



ENVIRONMENTAL

proactive creative solutions >>>

The industrial legacy of the Great Lakes region has left many environmental secrets. Aging structures were built with materials once considered safe, like asbestos and lead, that are now known hazards to human health and safety. These and other contamination sources can leave you with questions about next steps as you prepare to purchase or develop real estate, seek to improve safety of your land and buildings, or come into compliance with state and federal regulations.

The state of Michigan is known for its natural resources such as wildlife, wetlands, and one of the wonders of the world, the Great Lakes. These resources require protection through the development of mitigation plans prior to development, or reclamation once work has taken place. Because of the abundance of our natural resources, you may have questions related to navigating the assessment and permitting process or how you can enhance the ecosystems found in your own backyard.

Wightman environmental service experts deliver proactive solutions for developers, financial institutions, utilities, municipalities, businesses, and private individuals through a range of assessments, testing, audits, remediation, and consulting services.

INDUSTRIAL HYGIENE

- Asbestos Surveys & Third-party Oversight
- Lead Surveys & Risk Assessments
- Mold Survey
- Radon Testing
- Indoor Air Quality (Testing & Permitting)
- Hazardous Waste Surveys

DUE DILIGENCE

- Phase I Environmental Site Assessments
- Phase II Environmental Site Assessments
- Baseline Environmental Site Assessments
- Due Care Compliance & Analysis
- Hydrogeological Investigations
- Underground Storage Tank Sites
- Leaking Underground Storage Tank Site Characterization
- Spill Prevention, Control & Countermeasure Plans (SPCC)
- Pollution Incident Prevention Plans (PIPP)
- Facility Wide Compliance Inventory
- Stormwater Compliance Plans
- Wellhead Protection Plans & Abandoned Well Management Programs
- Solid Waste Permitting

SOIL ASSESSMENTS

- Dredging Permitting & Sampling
- Geotechnical Investigations

BROWNFIELD

- Project Facilitation & Management
- Grant & Funding Support

NATURAL RESOURCES

- Soil Erosion & Sediment Control
- Wetland Delineation
- Species at Risk-Surveys & Habitat Assessments
- Permitting
- Outdoor Air Quality (Testing & Permitting)

ENVIRONMENTAL MANAGEMENT

- ISO 14001 System Development & Audits
- Inspection, Permitting & Reporting
- General Consulting

ENVIRONMENTAL SPECIALTIES

- Site Closures
- Permitting
- Compliance
- Site Remediation & Impact Investigations



SURVEY

details checked, verified, and never assumed >>>

Real estate is one of your largest assets. As your trusted adviser, our job is to help you protect your investment through reliable, accurate, and informed land surveying services.

As a developer, general contractor, utility provider, or landowner, you need to know everything is right before the transaction is complete or site work begins. We apply our technical expertise and passion for detail to every survey, construction project, parcel division, and related task to provide you with accurate information needed to avoid costly mistakes.

The Wightman story of land survey excellence stretches back to our founding in 1946. Over more than 70 years, we have built a legacy of precision work that has shaped decades of residential, commercial, utility, and industrial land development throughout southwest Michigan and northern Indiana for our neighbors and friends. Our surveyors are among the most respected in the region, licensed to perform your survey work in Michigan,

Indiana, Ohio, and Texas.

We are also pre-qualified by the Michigan Department of Transportation for road design survey work.

SURVEY SPECIALTIES

- Design
- Construction
- Elevation Certificates
- Land & Easement Legal Descriptions
- Boundary
- Land Title
- GPS Services
- Utility
- Mortgage Inspections



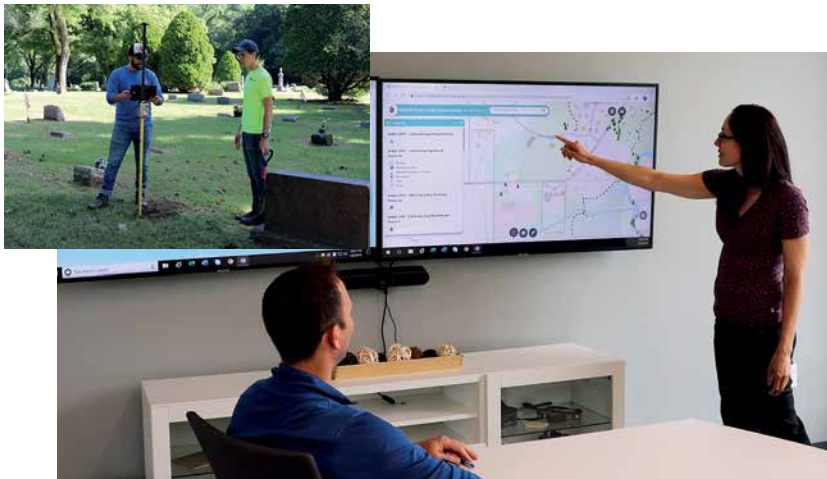
GIS

decision making power >>>

Imagine the value of dynamic data that guides money-saving preventative maintenance, informs capital investment planning, averts costly downtime stemming from equipment failure, and even saves lives during emergencies. These are a few of the benefits of partnering with the Wightman GIS team.

GIS SPECIALTIES

- GIS Services
- Online Interactive Mapping
- Asset Management
- Database Deployment & Management
- Training, Ongoing Maintenance & Support
- Infrastructure Locating & Mapping
- ArcGIS ONline Implementation
- Data Compilation & Analysis
- Custom Data Processing & Automation Tools
- Crowdsourcing Data Solutions



INTERIOR DESIGN

more than paint deep >>>

Our process is rooted in the science of how environments influence people. It's about understanding the dynamics of open floor plans, private work spaces, and co-worker collaboration. It's all about knowing how furnishings contribute to student learning. It's about having insight into how layout contributes to an unforgettable customer experience. It's about creating spaces to meet your needs.

INTERIOR DESIGN SPECIALTIES

- Programming/Needs Assessment
- Schematic Design
- Space Planning
- Finish & Material Selection
- Furniture Layout & Selection
- Construction Drawings
- Renderings & Animation



LANDSCAPE ARCHITECTURE

connecting people and the outdoors »»

Think about where you enjoy time outdoors. Strolling down a tree-lined downtown sidewalk with a steaming cup of coffee in hand. Channeling your inner weekend warrior as you hike and bike that nearby trail. Watching your kids play soccer at the new athletic field over by the school. These places—the ones that lie between the buildings that architects plan and the roads that engineers design—are what Wightman's Landscape Architects are passionate about.

LANDSCAPE ARCHITECTURE SPECIALTIES

- Parks & Recreation
- Streetscape Design
- Green Infrastructure
- Landscape Plans
- Site Analysis
- Historical Preservation Plans



PLANNING

unlock the power of a plan »»

You have to know where you want to go in order to get there. Then, you need a plan to make it happen. As simple as that sounds, a solid plan requires exploration, insight, knowledge, communication, and a lot of listening. Wightman planners excel at this. We can help you promote growth, wisely manage resources, and create places where people thrive.

PLANNING SPECIALTIES

- Master Plans
- Economic Development
- Feasibility Studies
- Data Compilation & Analysis
- Community Engagement
- Bond Issue Assistance
- Contractual Services
- Urban Design & Master Planning
- Educational Facility Planning



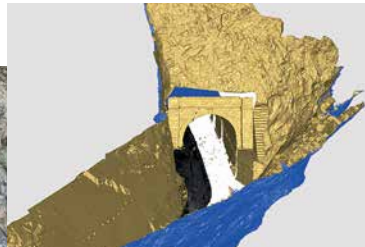
REALITY CAPTURE

3D precision and detail »»

A new level of informed problem solving is available for your design, construction, and building management projects. The Wightman reality capture experts deliver 3-dimensional modeling information and solutions that save money, reduce costly delays, improve safety, and protect the investment you've made in your facilities. Reality capture documents existing, or "as-built", conditions of buildings, infrastructure, mechanical systems, and surrounding environments through stationary and drone-based, high-definition laser scanning (HDLS) technologies.

REALITY CAPTURE SPECIALTIES

- High-definition Laser Scanning
- Drone Mapping
- Building Information Modeling (BIM)





WE

»»

PROVIDE A MULTIDISCIPLINARY APPROACH TO CLIENT-CENTERED SOLUTIONS WITH PRACTICAL INDUSTRY EXPERTISE.

We are driven to create partnerships where we become part of your team—a trusted adviser who brings original, effective, and practical solutions to the table, especially in these key expertise areas.

COMMERCIAL

Wightman's goal is to work with you to create well-planned functional design, introduce innovation, and focus on details that deliver value to your business. By pairing your vision with our design knowledge, we deliver a series of unique design solutions. Together, we review, evaluate, and fine-tune the options into a plan that will help your business prosper.

GOVERNMENT

Our company was founded on service to municipalities. It has been one of our strengths for more than 70 years. We become an extension of your team by understanding the nuances of your operation and by applying our expertise to help you make practical, long-term plans that maximize resources and deliver value to your constituents.

EDUCATION

Wightman planners and designers help you make the most of unique opportunities and solve real challenges facing your educational organization. Our goal in educational facility planning is to enhance student performance while reducing operational costs. To do this, we build empathy, define success, and iterate/innovate.

UTILITIES

What sets Wightman apart is that we take the time to understand our clients, your processes, and how your internal communication channels work. With this level of attention to client operations, we are able to facilitate, streamline, and expedite how the work gets done—making your job easier.





WE
»»

WORK CLOSELY WITH EACH OTHER AND
COLLABORATE ACROSS OUR FOUR OFFICES.

*Contact any of our offices today to find out how
we can assist you with your project.*



W+ WIGHTMAN
it's all about people



1670 Lincoln Rd. (M-40)
Allegan, MI 49010
269.673.8465



2303 Pipestone Rd.
Benton Harbor, MI 49022
269.927.0100



433 E. Ransom St.
Kalamazoo, MI 49007
269.327.3532



306 S. Washington Ave., Suite 200
Royal Oak, MI 48067
248.791.1371

